

YOUR OSTARA SHOPPING LIST

- White altar cloth
 - Tapestries
 - Crystals
 - Cauldrons
 - Moon Water
 - Wheet Weaving
 - Goddess Statues
(Brighid, Arianrhod or Star Goddess)
 - Journal
 - Gemstones
(Moonstone)
 - Colored Candles
(White, Green, Red, Gold, Silver)
 - Hand Crafted Incense
 - Charcoals
 - Offering Bowl
 - Milk and Honey
-
-
-
-

This information is provided
free of charge for guests
of



A Magical Emporium

3834 S Main Street
Salt Lake City, UT 84115
801.906.0470
www.croneshollow.com

WHAT IS IMBOLC



DEITIES OF IMBOLC

SETTING UP AN IMBOLC ALTAR

Imbolc occurs approximately Feb 1. It is one of the eight sabbats celebrated by Pagans (Wiccans, Druids, Heathens, Witches, Magicians, Kemetics, etc) on the Wheel of the Year. It is one of the “fire sabbats”, meaning that the element of fire plays a large part in the lore of the celebration.

Imbolc, also known as Imbolg, Oimelc or St. Brigit’s Day is a day to honor the goddess Brigid, the patroness of Smithing, Healing & Poetry.

The word Oimelc means “ewes milk” and is associated with the birth of lambs in early Spring. The coming of the milk meant that Spring was around the corner and winter diets which consisted of dried foods and very little meat could be enhanced with milk and soft cheeses. This time of year was a cause for celebration and reverence to the gods who brought such bounty.

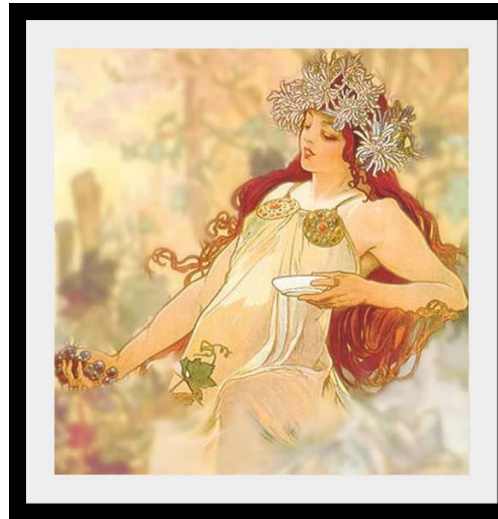
It is the beginning of new cycles and in some traditions is the time for the birth of the Sacred King, an archetypal godform.

Imbolc is a celebration of many things to many people, but one thing is clear -- for folks in the Northern Hemisphere, it’s the halfway point between the dark of winter and the beginning of spring. The Roman celebration of Lupercalia, which takes place around this same time, brings with it a purification theme, as does the Christian celebration of Candlemas. This festival of light is the perfect time to honor the gods or goddesses of your hearth and home.

Sources:

www.wikipedia.com

www.paganwiccan.about.com



BRIGHID, BRIGID, BRIDE

ARIANRHOD

HESTIA

VESTA

CERRIDWEN

EROS

FAUNUS/PAN

APHRODITE

BAST

Setting up an Imbolc altar can be done by visualizing a fresh start – something pristine. The altar could be covered with a white cloth, symbolizing the white mantle of snow outside. Add a green swath of fabric for Brigit’s green cloak or red candles to symbolize the ascendancy of the Sun. White candles are often used as well for purity and new beginnings. Since this sabbat is often associated with Brigid, add a few items which honor the Smith, Poet and Healer; perhaps a journal of your poetry or an offering of dried healing herbs from the Crone’s Hollow apothecary. You might also add a small cauldron with an alcohol flame to symbolize the forge or a few oils or tinctures you have created.

A statue of Brigit or a white star goddess is a nice central figure. You can also add some wheat weaving or corn dollies as offerings to the flame during your Imbolc ritual.

Round out a silver and white theme with silver chalices and moonstones. Add fragrant incense, such as myrrh, frankincense, or one of the hand blended loose incenses created at the Hollow for a nice finishing touch.

If you have questions about setting up an Imbolc altar, ask one of the friendly Witches on the Crone’s Hollow staff...we’ll be happy to help!